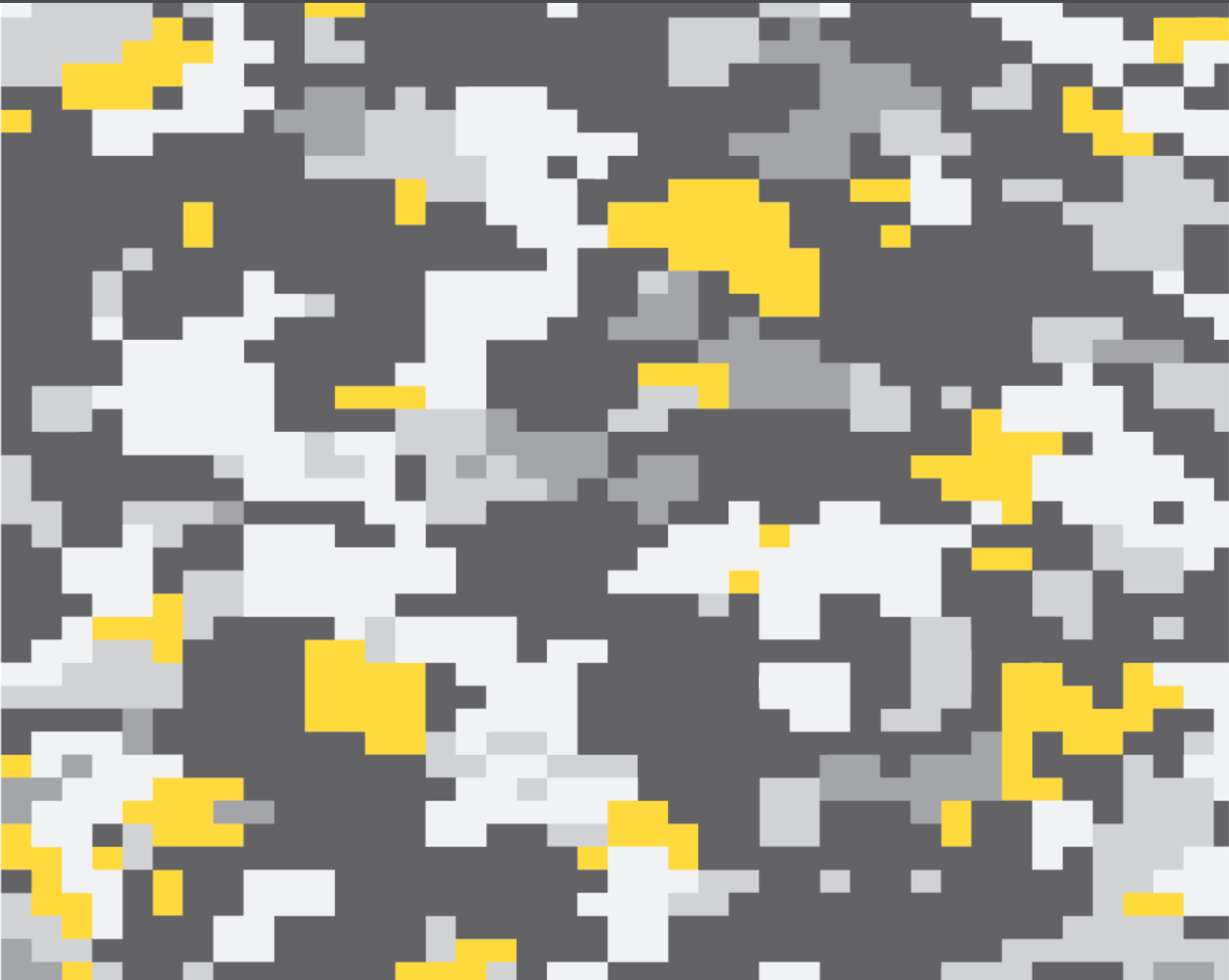


Superfly[®] Basketball Hoop

User Manual



Superfly^x

Basketball Hoop

The following models are all compatible with our Superfly X Basketball Hoop.
We do not recommend use of this Basketball Hoop with non Superfly X Trampolines.

[SUPERX8] Superfly X Trampoline 8ft

[000BOM-SUPERX10] Superfly X Trampoline 10ft

[000BOM-SUPERX12] Superfly X Trampoline 12ft

[000BOM-SUPERX14] Superfly X Trampoline 14ft

[000BOM-SUPERX15] Superfly X Trampoline 15ft

This trampoline accessory comes equipped with warnings and instructions for its proper assembly, care, maintenance, and use. This information must be read by all supervisors and users before any person is allowed to use it.

Follow all warnings pictured below or otherwise included in this manual. If you have any questions regarding these warnings, please contact us.

After reading this manual if you have further questions or if you would like to contact us, please visit our web site at www.tradetested.co.nz.

For Assistance

Contact our exclusive New Zealand retailer Trade Tested

0800 800 880

support@tradetested.co.nz

www.tradetested.co.nz

Basketball Hoop Parts List

Congratulations on your Superfly purchase!
Please follow these assembly instructions carefully
and you'll be up and dunking in no time!

1 Backboard



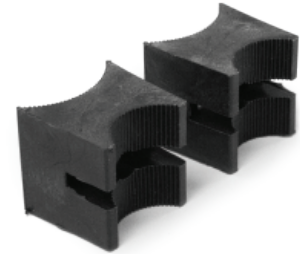
2 Basketball Rim



2 L-Shaped Basketball Post



3 L-Post Spacers



4 L-Post Bolts



6 Long Poles



7 Poles (A)



8 Poles (B)



5 Eye Bolts



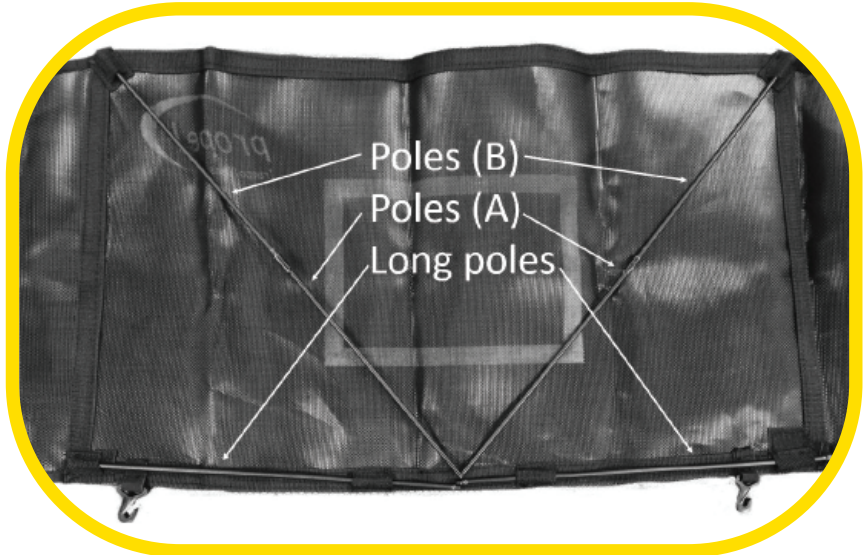
Basketball Hoop Assembly

Please read all instructions before beginning and make sure you have all parts necessary!

 30MIN  2 ADULTS

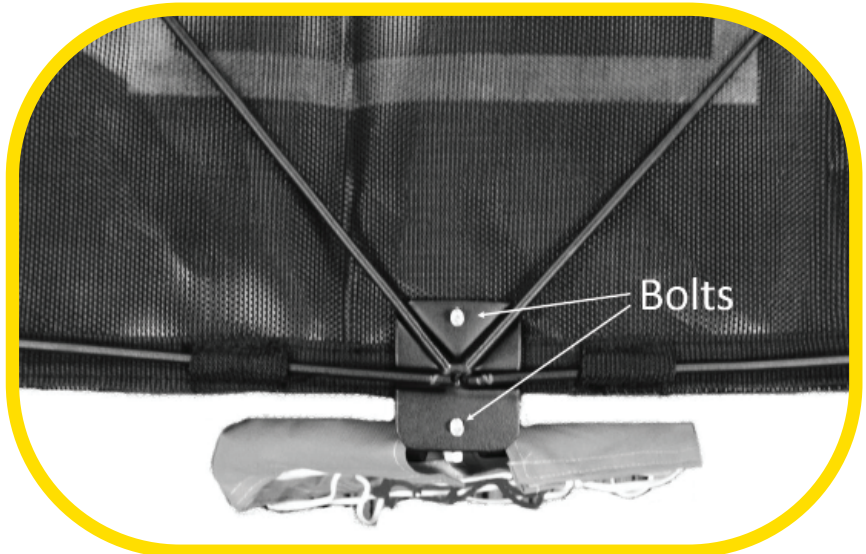
1 Insert Support Poles

Lay the backboard **1** face down and insert the support poles. See diagram.



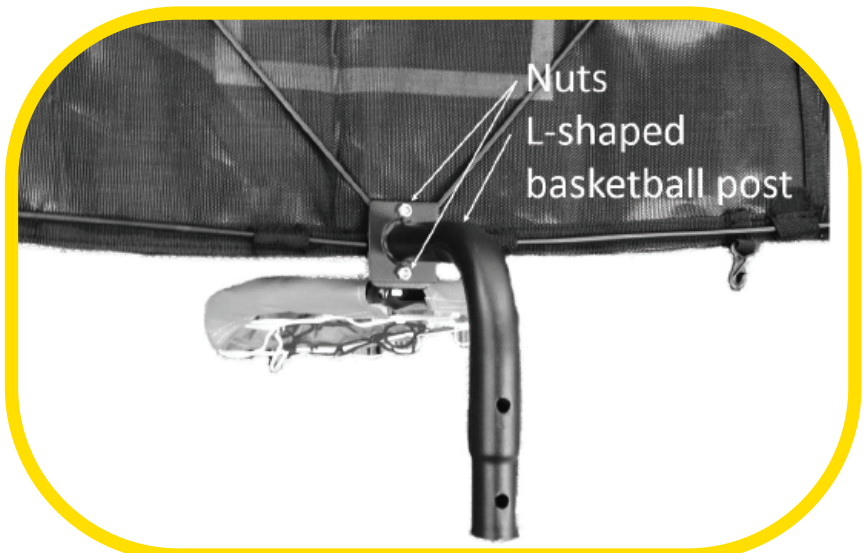
2 Attach Rim

Place the basketball rim **2** in the correct position and insert the two bolts **4** into the two holes in the basketball rim. See diagram.



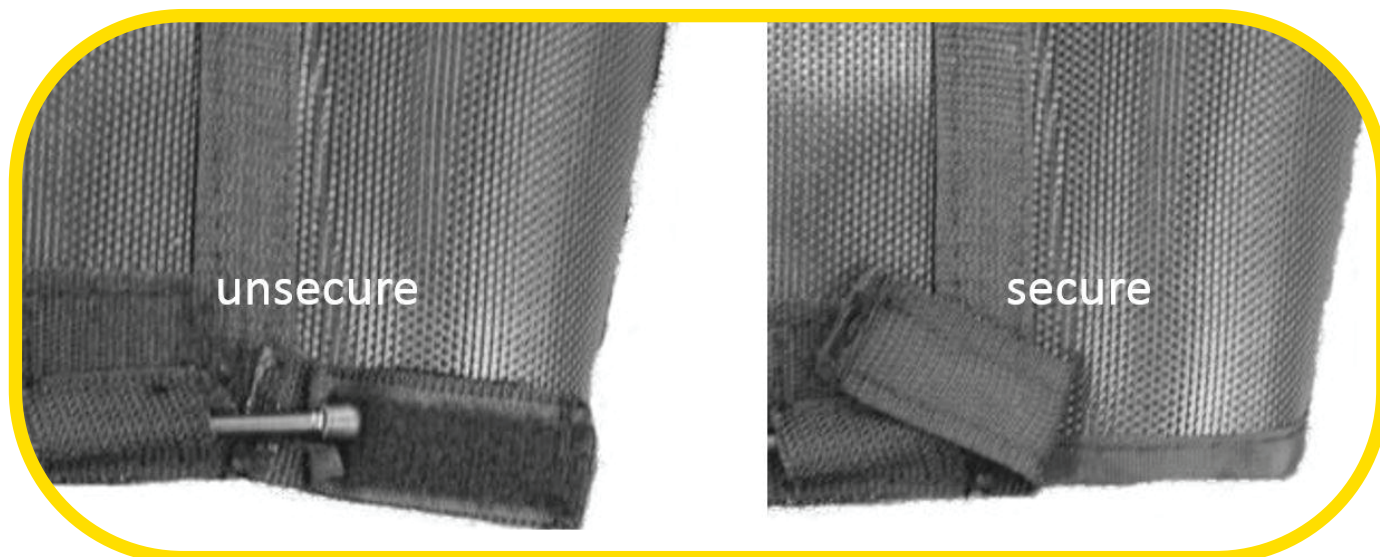
3 Attach L-Post

Place the L-post **3** over the current assembly, then tighten the nuts and bolts.



4 Secure the backboard

Secure the Velcro in the bottom corner of the backboard.



5 Remove safety net sock

Start by removing the trampoline net sock that covers the upper net rail. Pull out the securing pin and lift the sock off.



6 Remove the upper net pole

Unscrew the upper net pole and lift it off the lower net pole.

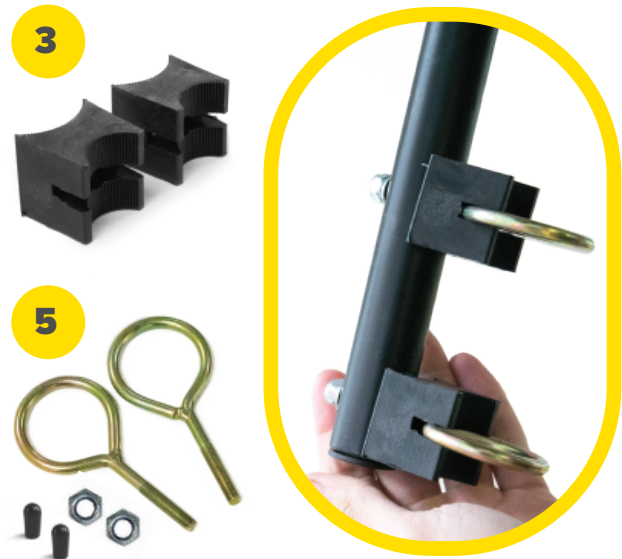


7 Attach eye bolts and spacers to L-post

Begin by slotting each eye bolt **5** into one of the L-post spacers **3**, ensuring that the rounded hook fits into the cut out in the spacer.

Now insert the tip of the eye bolt into the L-post making sure the spacers are on the same side as the hoop itself.

Hand tighten the included nuts **5** to secure the eye bolt and spacer to the L-post.



8 Attach basketball hoop to upper safety net pole

Slide the hand tightened basketball hoop onto the upper safety net pole. Ensure that the basketball hoop will be facing inward towards the trampoline once the upper safety pole is re attached.



9 Reattach the safety net sock

Whilst the basketball hoop is on the safety net pole, move back to the trampoline and pull the safety net sock back over the safety net pole and secure with the attached bolt.



10 Tighten and align the basketball hoop

Finish by aligning the hoop so that it will be facing the center of the trampoline and fully tighten the nuts so that it is stable. Attach the safety caps to the screws to cover the exposed bolt.



11 Reattach the net pole to the trampoline

Finish by attaching the upper net pole back onto the trampoline. You may need a second person to push the lower net pole inward in order to slide the upper net pole on.

Once the upper net pole is in place, secure the two together with the screw.



**Congratulations!
You're Ready To Go!**

For Assistance

Contact our exclusive New Zealand retailer Trade Tested

0800 800 880

support@tradetested.co.nz

www.tradetested.co.nz

